

## Ceedo Enterprise for XenApp Client Quick Guide

Ceedo Technologies and Citrix have partnered to provide a portability solution for the Citrix XenApp™ client (formerly Presentation Server Client or ICA Client). Now you can take your Citrix XenApp client with you on a flash drive, and launch it from any PC, without requiring installation or admin rights. But that's not all; Ceedo also makes Citrix XenApp come alive by presenting the applications available on your Citrix server to you on the Ceedo Menu Bar. Just click on the application you want to run and launch it.



We have virtualized the Citrix XenApp client and packaged it with Ceedo Enterprise as a solution. This document serves as a quick guide for the solution. You can download the solution from our website at: <http://www.ceedo.com/solutions/citrix/>.

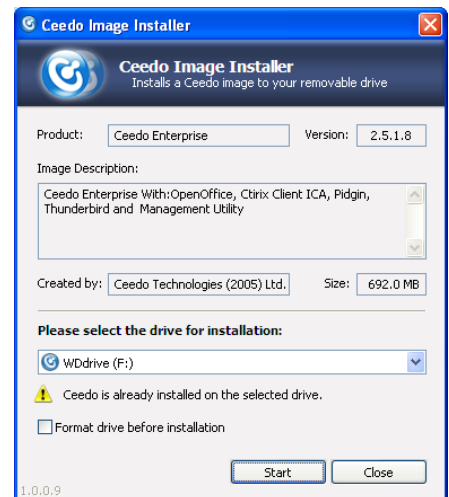
### About Ceedo Enterprise™

Ceedo Enterprise is Ceedo's solution for corporate and business customers. It enables organizations to create customized virtual workspaces, deploy them and manage them after they have been put in the field. Ceedo provides the Enterprise IT professional with tools to fully customize the user interface, remotely deploy new applications, and update existing applications. Ceedo also offers a management service where updates and customizations to the mobile workspace can be done on behalf of the enterprise.

### How to Use This Solution

Download the Ceedo installer from the provided web page and run it. This particular solution can only be used on a USB drive. For a solution that can run directly from the PC's hard drive, please contact Ceedo.

Select the drive letter that corresponds to your connected USB drive, and press "Start". The installer will install the Ceedo Enterprise solution onto your USB drive.



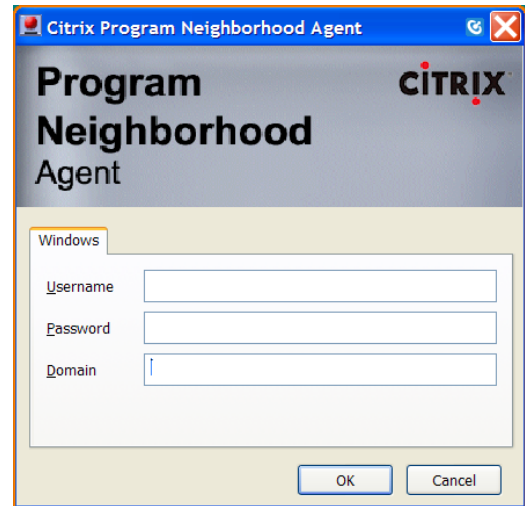
## Initial Load and Usage

At the end of installation process, choose the option to start Ceedo Enterprise. Ceedo Enterprise will start and automatically display the Ceedo DockMenu at the top of your screen.




After Ceedo Enterprise launches, you will see a box like the one here.

You can configure your own server in this box, or use the Citrix TestDrive server if you have a Citrix TestDrive account.



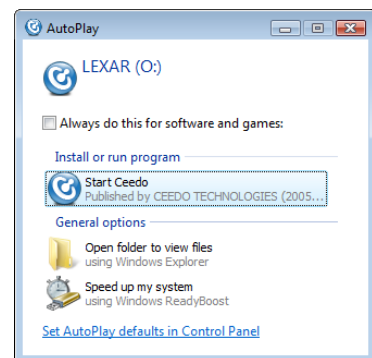
Note: the XenApp client is now running in your system tray, located at the bottom of the Windows® screen. After you have logged into the server, you ay use any of the resources available through it.



To end your session, select the “eject” button (  ) located on the DockMenu and Ceedo will “shutdown” and prepare you drive for removal.

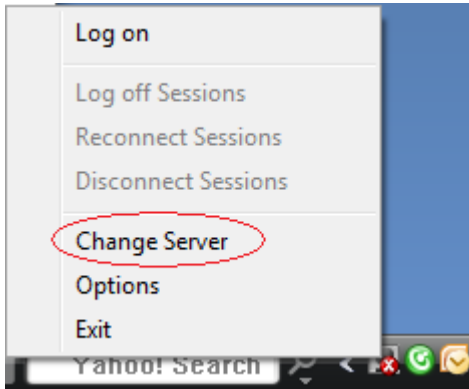
Note: Although it is not suggested, if improperly ejected, Ceedo will recover nicely and leave no data behind on the host machine, but a Windows error message could be displayed. According to Windows documentation, in rare cases there is also a possibility for data loss.

To re-run Ceedo, plug in the USB drive and choose “Start Ceedo” from the AutoPlay menu.



## Using Ceedo to connect to your own Citrix Server

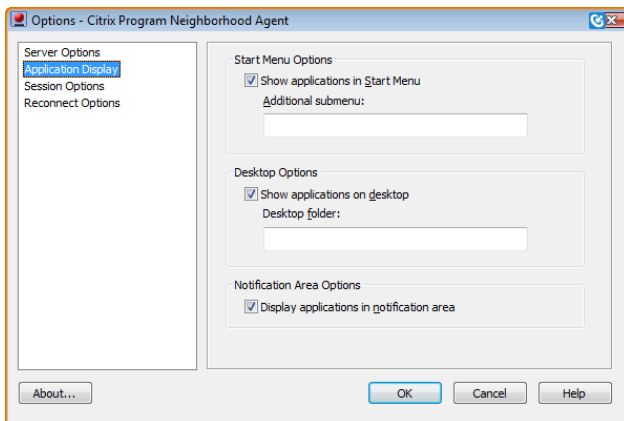
This solution may be configured to work with your own Citrix server. To do this, start the Citrix Program Neighborhood Agent and right click on the Citrix Program Neighborhood icon in the system tray.



Enter your server's name in the space provided and click update.

Right-clicking the icons on the DockMenu will give you the option to delete them.

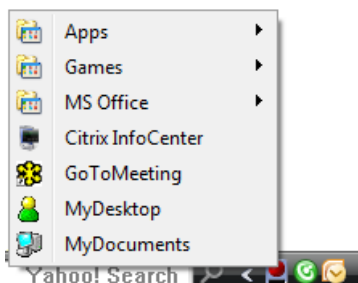
To auto-populate the DockMenu with the applications icons on your server, you can go to the options menu (located directly below **Change Server** option).



Here you can turn on the option to “**Show applications on desktop**”. This option will show all the icons that you immediately see when you right click the XenApp icon.

Auto-filled icons on the Citrix menus will also auto-fill the Ceedo DockMenu – see screenshots below.

Citrix menus:




Ceedo DockMenu:

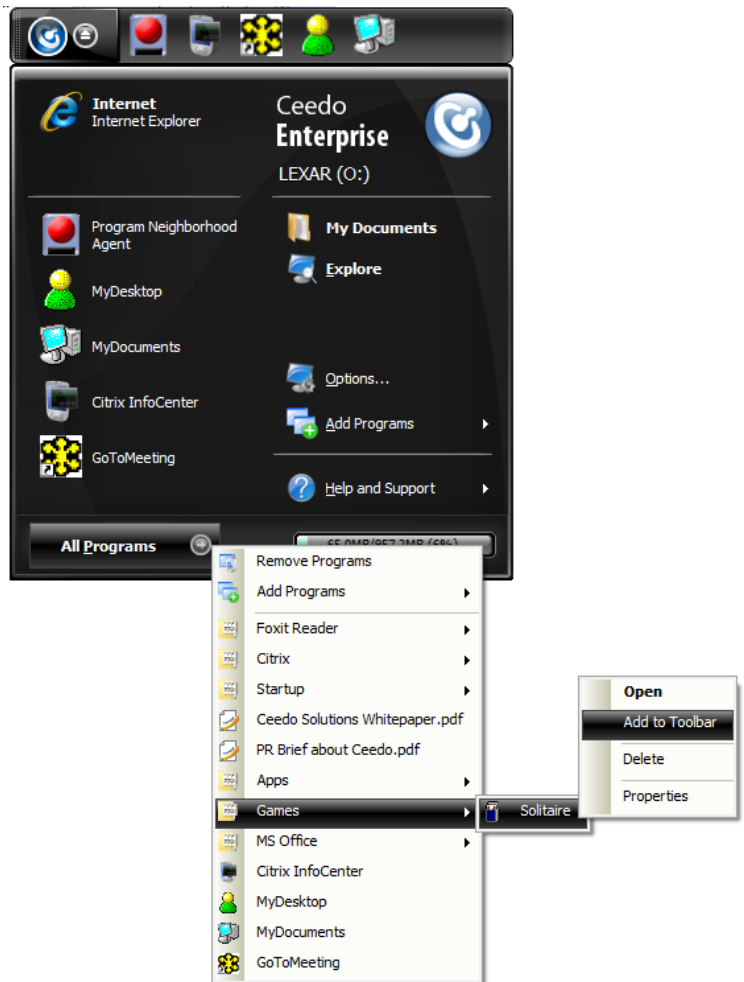


**Adding Shortcuts to the DockMenu**

You can add additional shortcuts to the DockMenu to make your Citrix environment even easier to use.

Here's how:

1. Open the Ceedo Easy Access Menu by clicking the Ceedo button 
2. Click on All Programs
3. Navigate to the program you want to add from the server.
4. Right click on it
5. Choose Add to Toolbar





### **Additional Capabilities of Ceedo Enterprise™**

Ceedo Enterprise supports standard Windows applications without need for modifications, does not require administrative rights on the host PC and creates a full workspace where the virtualized applications can interact with each other. Ceedo Enterprise works on Windows 2000, Windows XP, Windows Vista and Windows 2003.

For more information visit our website at <http://www.ceedo.com/solutions/citrix/>.