



Ceedo

Flexible Computing

Advanced Management Capabilities

Ceedo Client Management System (CCMS)

What Can We Manage?

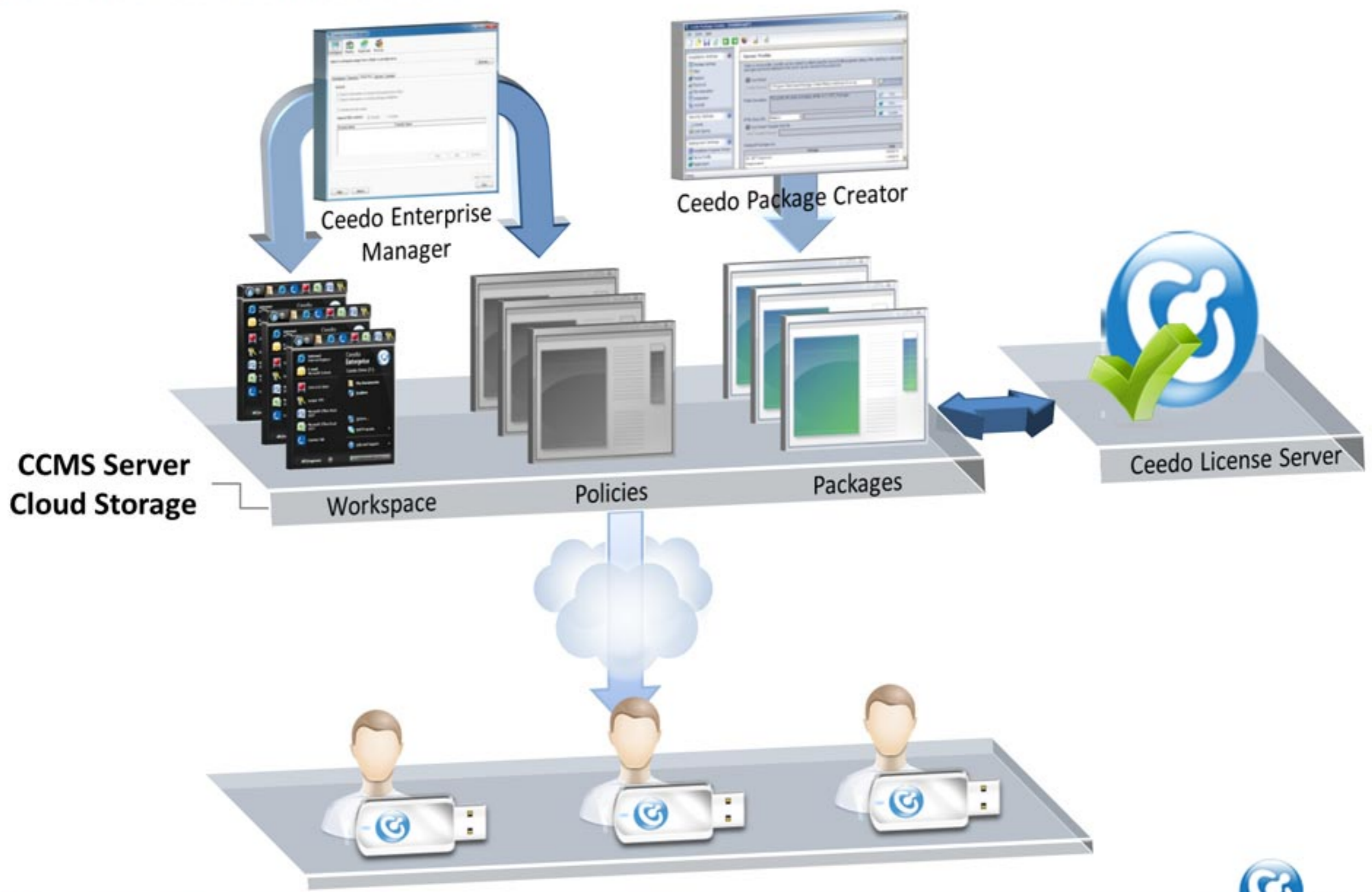
**All of Ceedo's workspace properties!
Including:**

- 🌐 Usage Policies
 - Sandbox transparency, security and UI
- 🌐 Package Deployments
 - Add / update / remove
- 🌐 Appearance Attributes
 - Placement, layout and branding

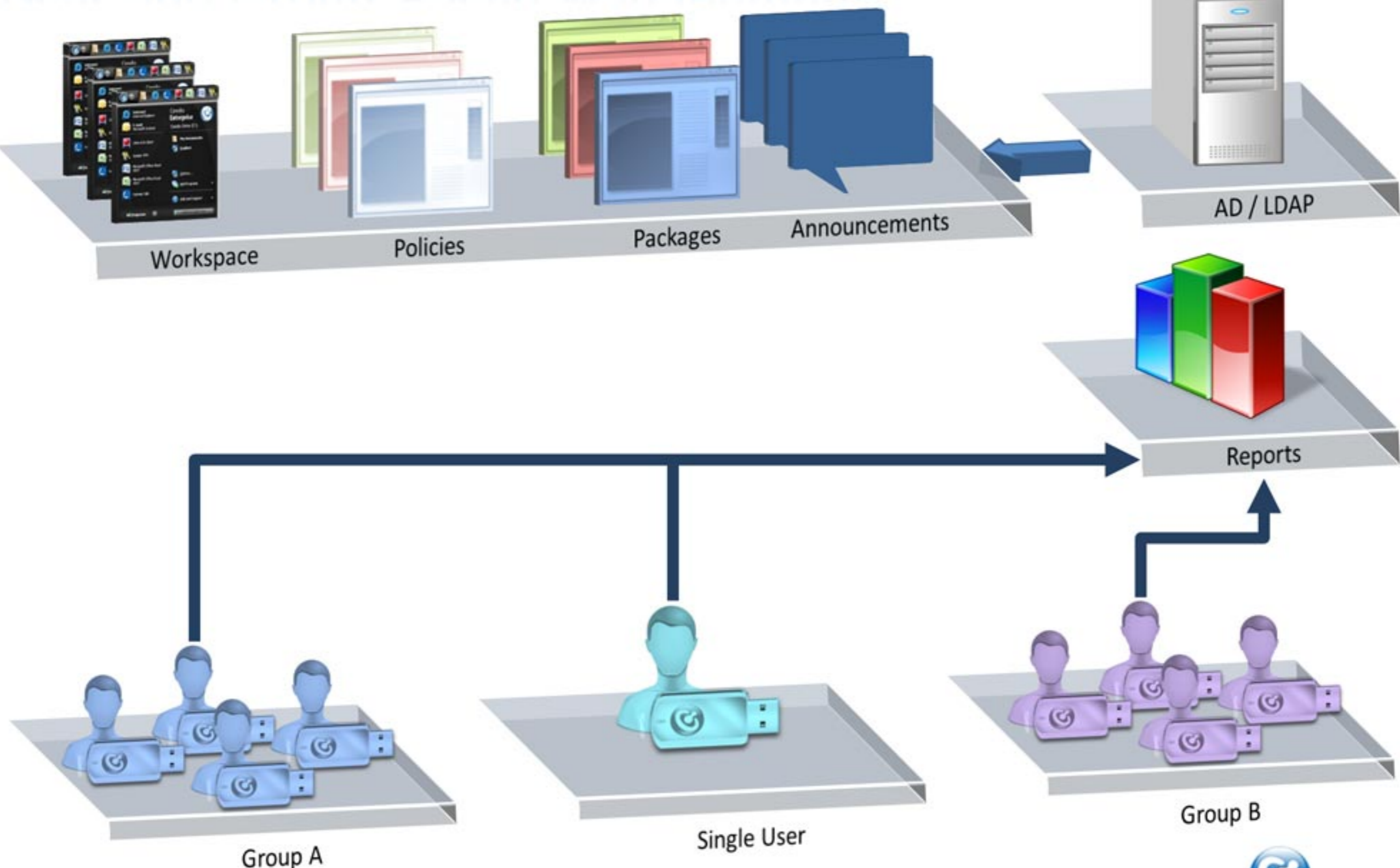


***Manage and deploy
at both User and Group levels...***

System Architecture



User and Group-Based Management



Ceedo Client Management - Features



Users & User Groups

- Users and Groups can be added and removed
- User authorization and de-authorization
- Multiple groups and memberships management
- Control Workspace activation



Package Management - Deliver applications and data remotely

- A set of files, registry and shortcuts that are pushed to the Workspace
- Packages can be added with multiple versions
- Packages can be assigned to Users/Groups with different parameters



Policy Updates

- Seamless updates: Smooth migration between Ceedo versions.
- Remote policy updates (change UI, online resources, and more...).

Ceedo Client Management - Features



Workspace

- Configurable virtualized environment to be distributed to the users
- One-time configuration by the admin
- Personalized by the user after activation



Announcements – Publish messages to users

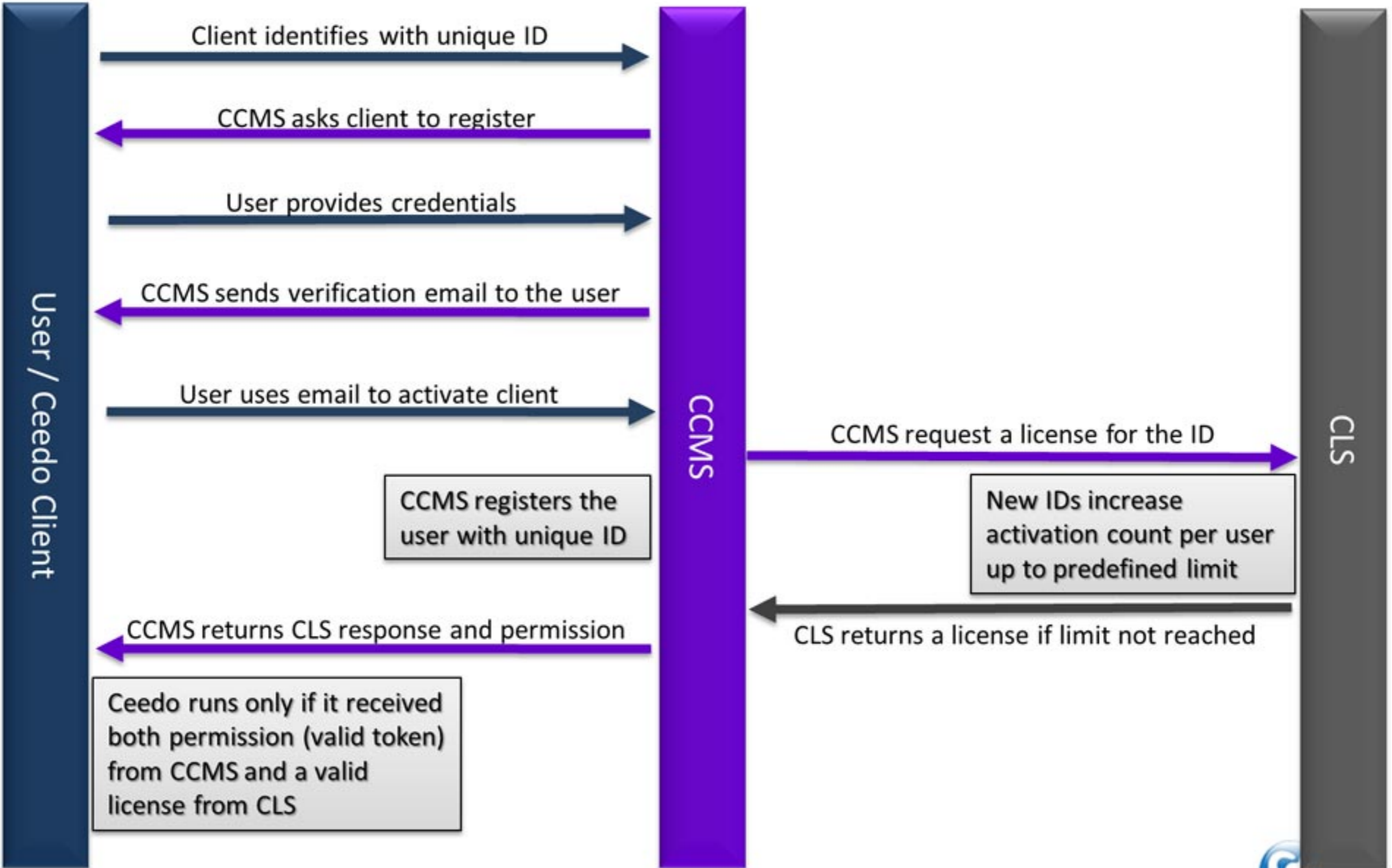
- Messages can be pushed to the users' Workspaces in the field

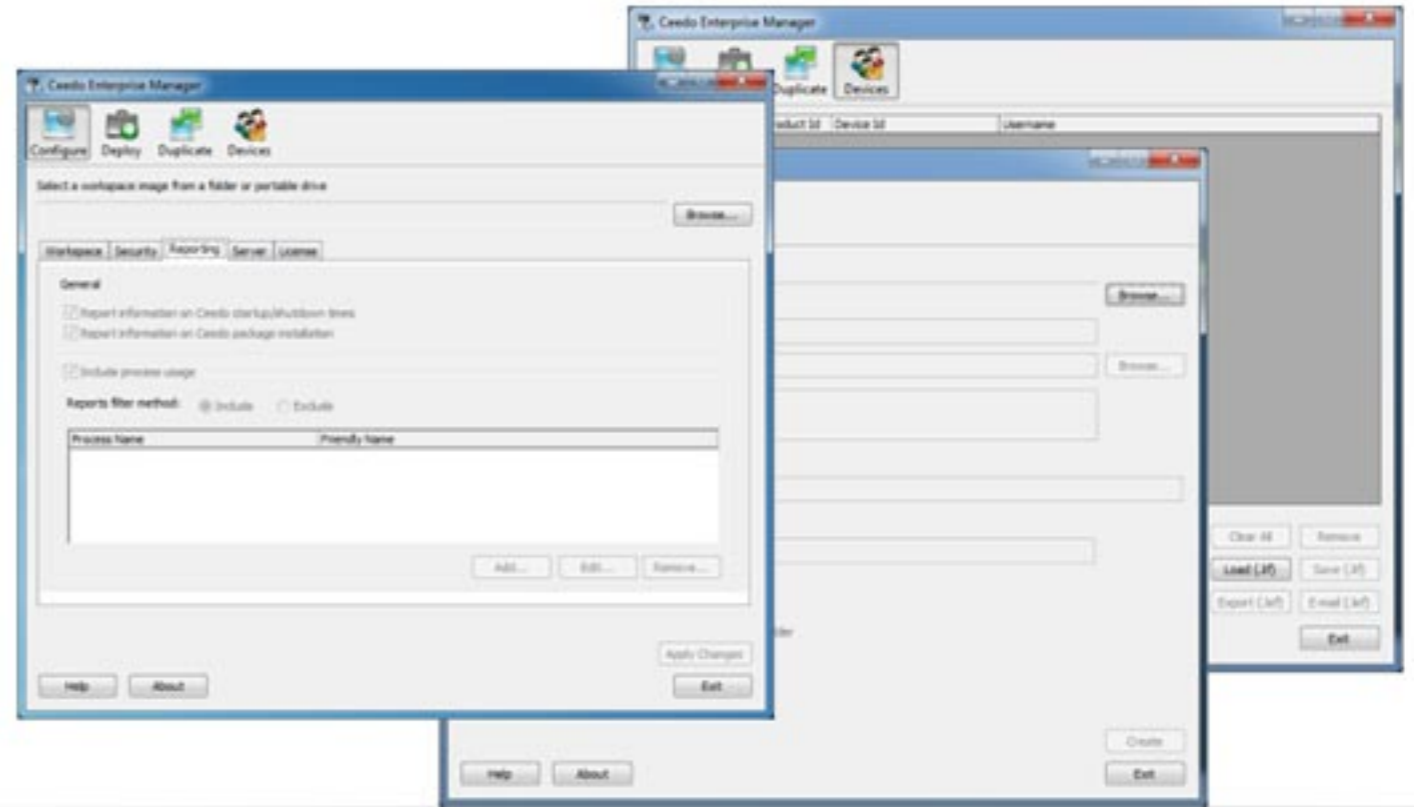


Usage Reporting – Audit Workspace and application usage

- Review Workspace activation and usage statistics
- Monitor application process execution
- Detect active or inactive users

Ceedo Client Management – Activation Flow





Ceedo

Flexible Computing

Ceedo Enterprise Manager

Prepare and Deploy Ceedo Workspaces

What Can Be Configured?

There are over 100 different configurations that can be applied to control the UI and the behavior of a Ceedo Workspace.

Workspace

- UI elements and content URLs

Security

- Controls security policies

Enforcement

- Policies related to the Host PC

Process Enforcement

- Block execution of specific processes

Reporting

- Configure reports sent to CCMS

Server

- Set management server URL

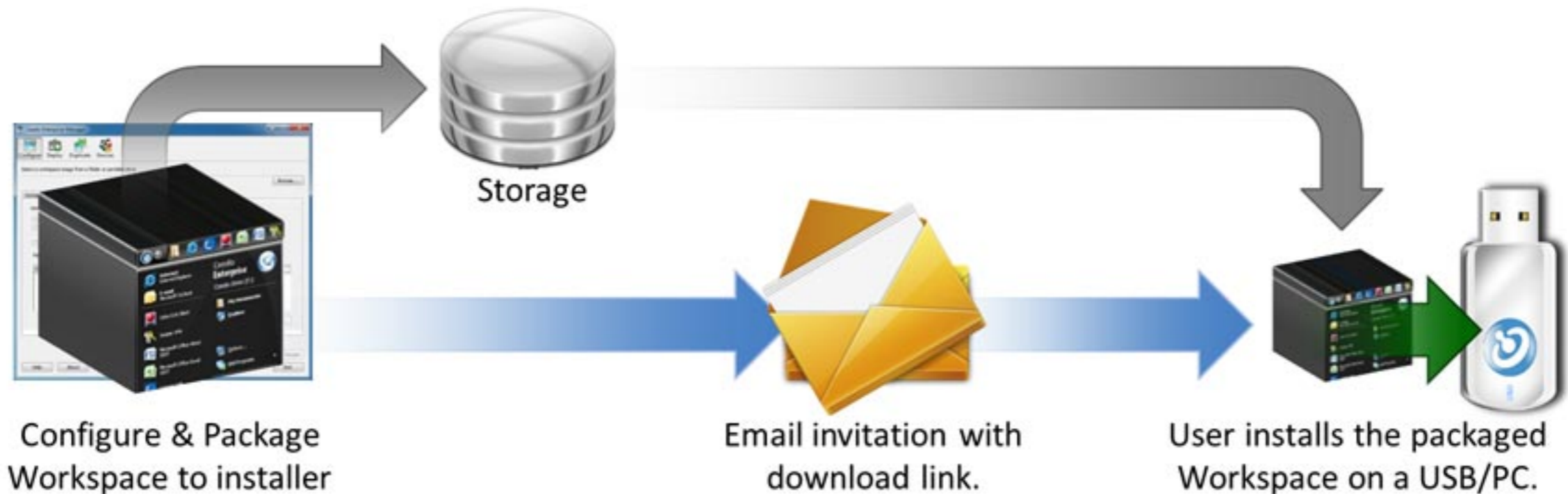
License

- Embedding an activation code in the workspace for automatic activation
*Used when working without a management server.

Ceedo Enterprise Manager - Features

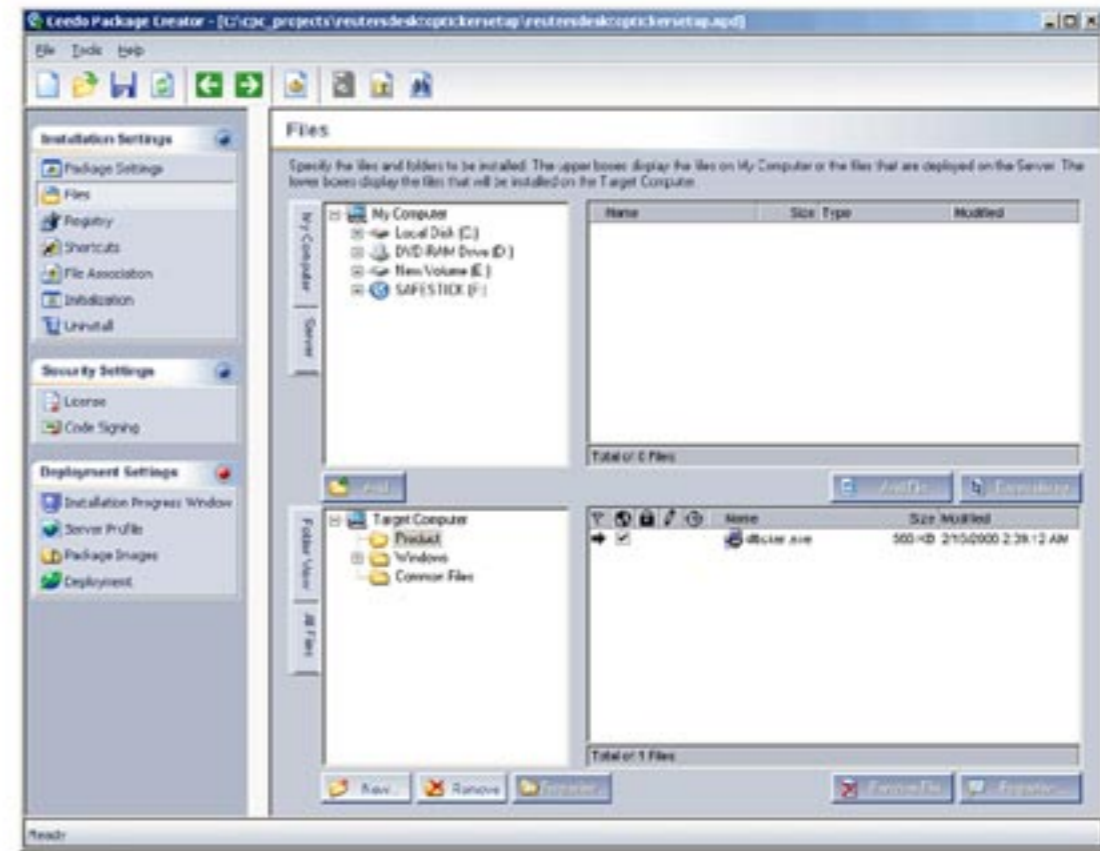
🌀 Workspace Deployment:

- 🌀 Configure & create Ceedo Enterprise Workspace installers



🌀 Duplicate Workspace

- 🌀 Create multiple “images” of a single pre-configured Workspace
- 🌀 Deploy Workspace duplicates to multiple devices
- 🌀 Backup/snapshot Workspace during configuration



Ceedo

Flexible Computing

Ceedo Package Creator

Create On-Demand Virtual App Packages

Ceedo Package Creator Overview

🌐 What is a Ceedo Package?

- A pool that includes all of the application's resources and components

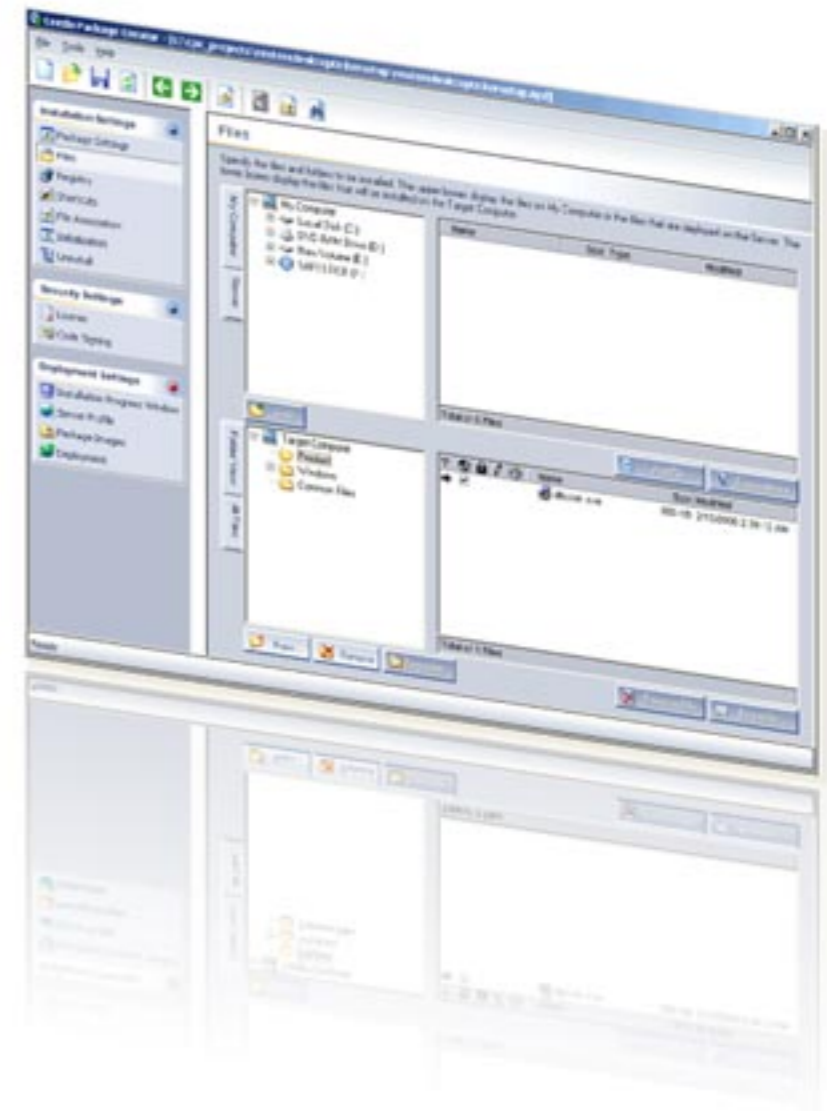
🌐 What is SmartPlay?

- SmartPlay is a delivery platform which streams Ceedo Packages over the network at file level.
 - Can download only delta (new/updated files)
 - Includes Workspace update instructions
 - Highly configurable
 - Feature-rich



Ceedo Package Creator - Features

- 🌀 Deploy applications to locked-down machines
 - No admin/elevated privileges rights required
- 🌀 Automatic self-update
 - Automatic detection and download
- 🌀 Updates streamed over HTTP/s
 - Prevent unnecessary firewall breaches
- 🌀 Prevent installation problems on the host
 - Registry issues
 - OS versions compatibility
 - Application conflicts
 - Orphan files





Ceedo

Flexible Computing

Thank You.