



Ceedo

Flexible Computing

Ceedo Portable Computing Drilldown

Products, Technology and Components



Ceedo

Flexible Computing

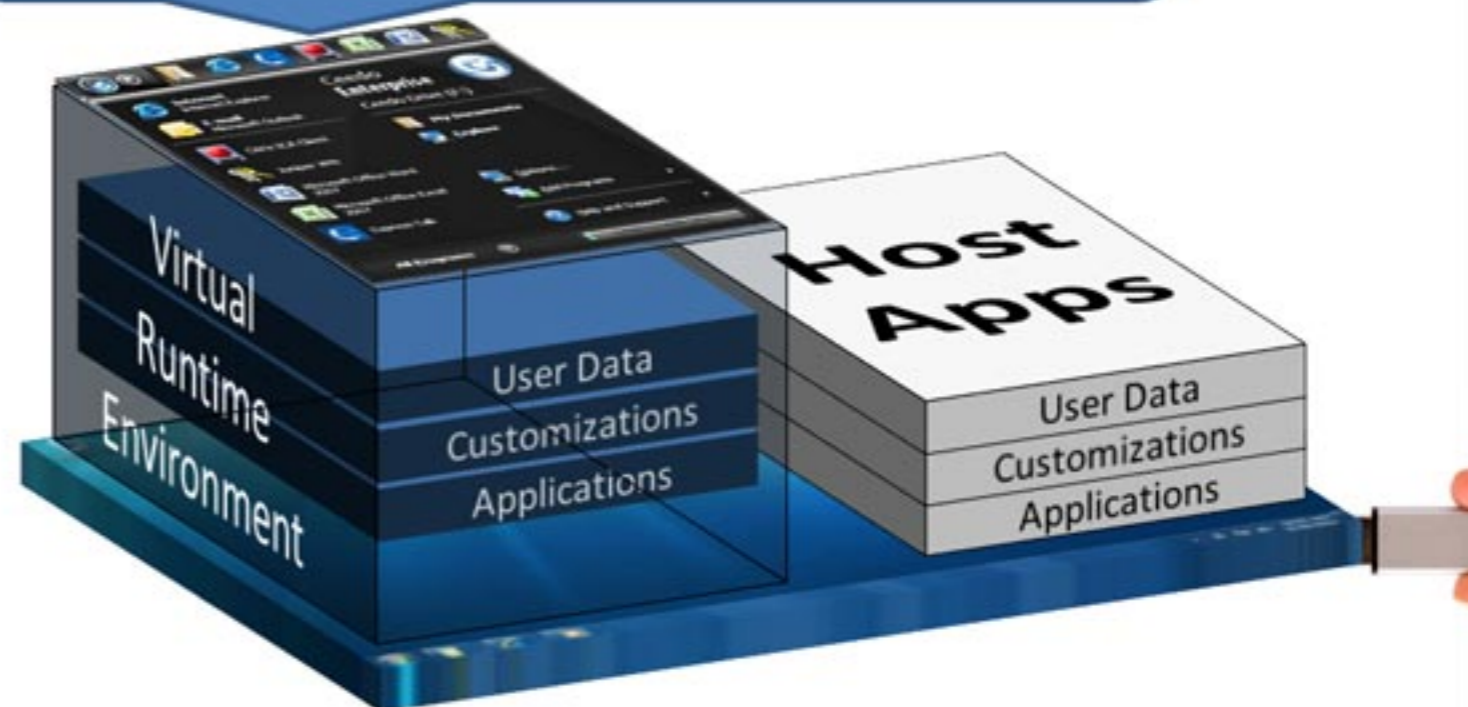
Ceedo Quick Technology Overview

This will help you understand where Ceedo's features and benefits come from.

Ceedo's Virtual Runtime Environment

- ⌚ Does not require any form of installation (including agents)
- ⌚ Creates a sandboxed independent runtime environment
- ⌚ Provides applications with all the resources they require internally
- ⌚ Can work on any windows version, regardless of user privileges, and in any architecture (PC/VDI)

Ceedo Enterprise also provides a user-friendly console to run, manage and install new virtual applications.



Ceedo Enterprise Architecture

Example Applications:



Security Features:

- Integrated 2FA
- Encryption
- Reporting
- Read Only



Ceedo Management Console

- Apps
- Data
- Users
- Policies



At Home



Desktop PC

On The Road



Laptop/Any PC

Contractors



BYOC

Point of Sale



Thin Client



Ceedo

Flexible Computing

Ceedo Components and Products

Ceedo Enterprise (CE)

- ④ Ceedo Enterprise is Ceedo's virtualization platform intended for business and enterprise users.
- ④ It Enables you to take your computing environment with you wherever you go.
- ④ It is light-weight, with zero footprint and zero install.
- ④ It has enhanced security and sandboxing, and can be remotely managed.



Ceedo Personal (CP)

- ④ Ceedo Personal is Ceedo's virtualization platform intended for non-business commercial users.
- ④ Ceedo Personal is a portable working environment, carried conveniently on removable drives.
- ④ Ceedo Personal is licensed for personal users only.
- ④ Ceedo Personal cannot be managed using a management console.



Ceedo User Interface

- Ceedo's User Interface (UI) consists of two main components: the *Docking Toolbar* and the *Easy-Access Menu* (EAM).

Docking Toolbar – enables the end-user to open the EAM from the Docking Toolbar to launch applications.

Easy-Access Menu – enables the end-user to launch Ceedo-installed programs, use various features, and configure options.



Ceedo's UI is highly customizable.
It can be branded to suit your company's requirements.

Contact your Ceedo Rep for more information...

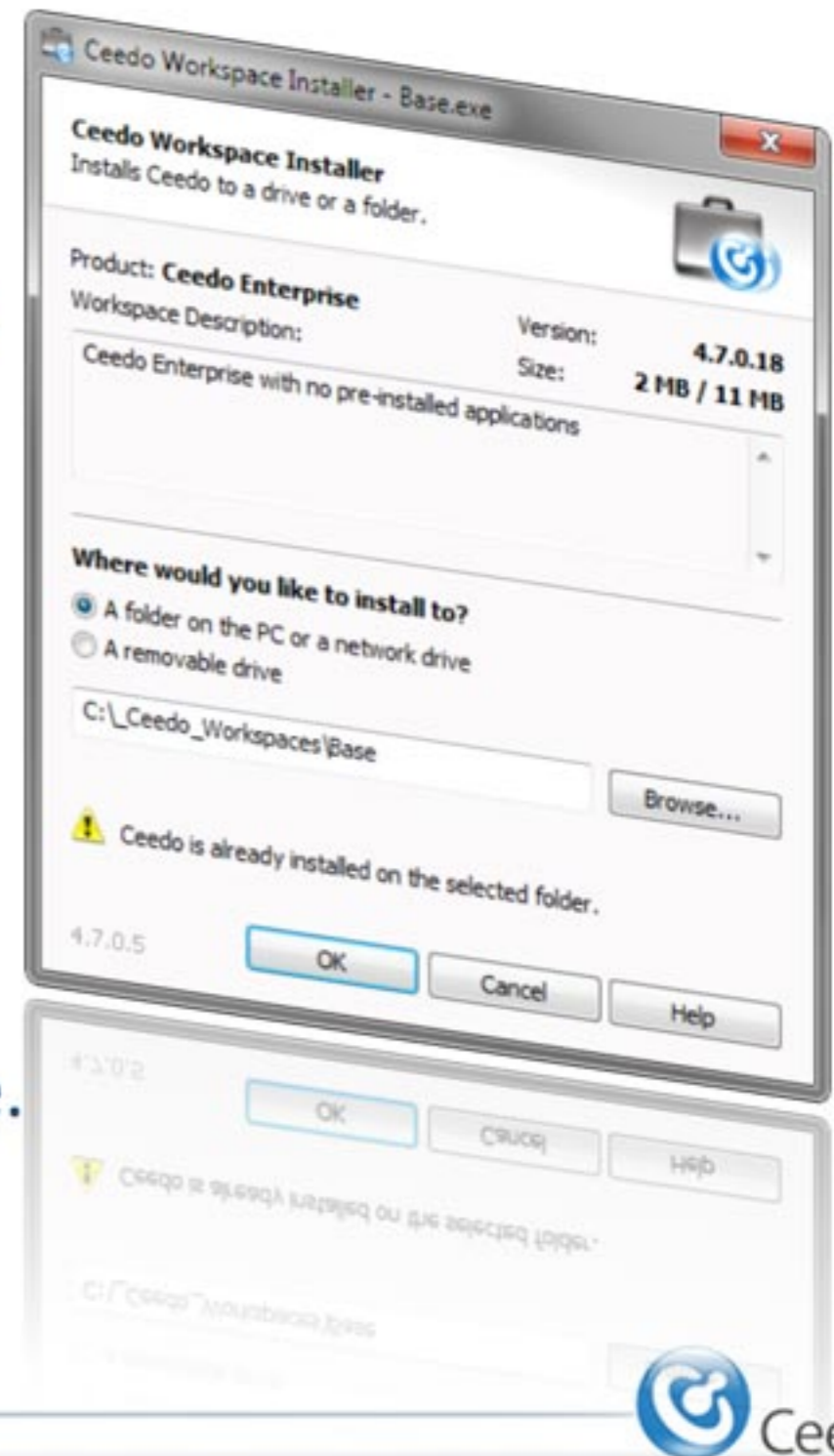
Workspace

- ⌚ A *Ceedo Workspace* is a Ceedo Virtualization Client which was deployed to the end-user, including its installed applications and policies.
- ⌚ Ceedo's Workspace is what end-users use to perform their tasks.
- ⌚ Applications can be installed into the Workspace using a standard setup file, or from the Ceedo Programs Directory.



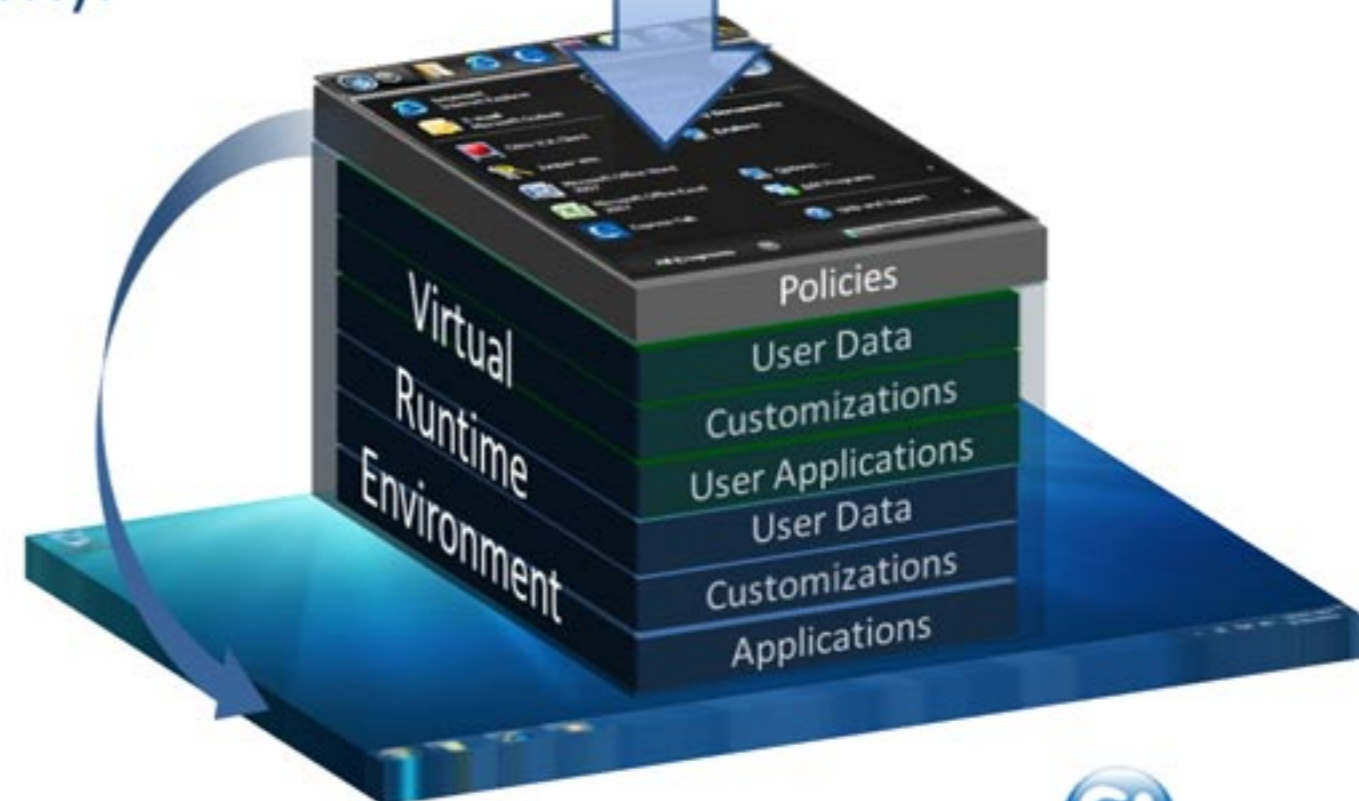
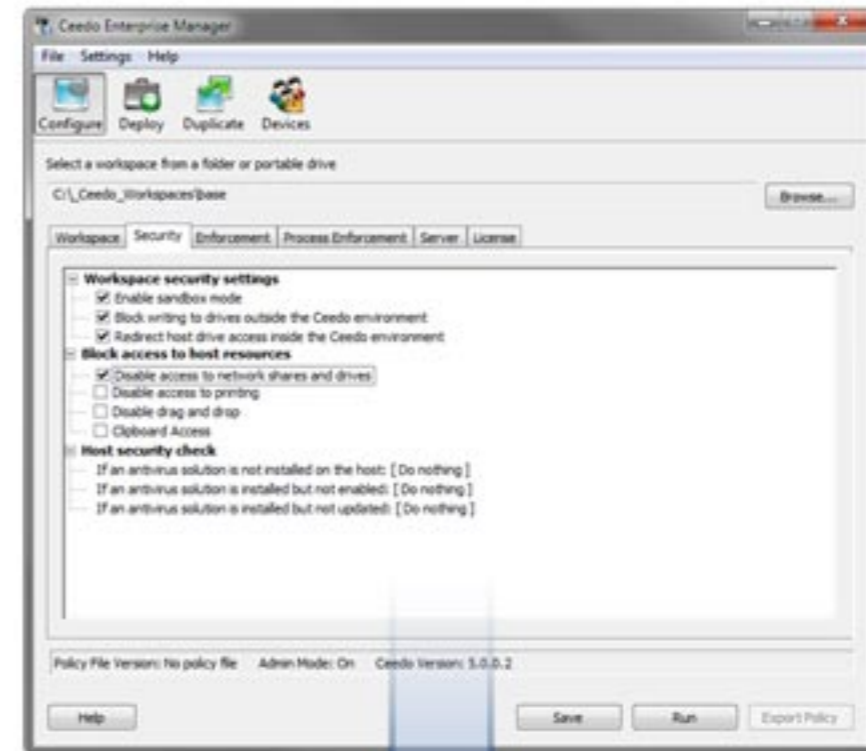
Ceedo Workspace Installer (CWI)

- ④ The *Ceedo Workspace Installer* (CWI) package installs a pre-configured Ceedo Workspaces to a USB drive, or to a host-based folder.
- ④ Workspaces cannot be copied to a device.
- ④ CWI packages are created using the Ceedo Enterprise Manager (CEM).
- ④ The CEM can also duplicate Workspaces.
- ④ CEM uses 7-Zip for packing the Workspace.
- ④ Workspaces can also be digitally signed.







Workspace Policies

- The Workspace Policy defines advanced settings, enforcements, sandboxing, host security checking, etc.
- Policies are configured using the Ceedo Enterprise Manager (CEM).
- Policies can be imported into Ceedo Client Management System (CCMS), and then be assigned to users and user groups.



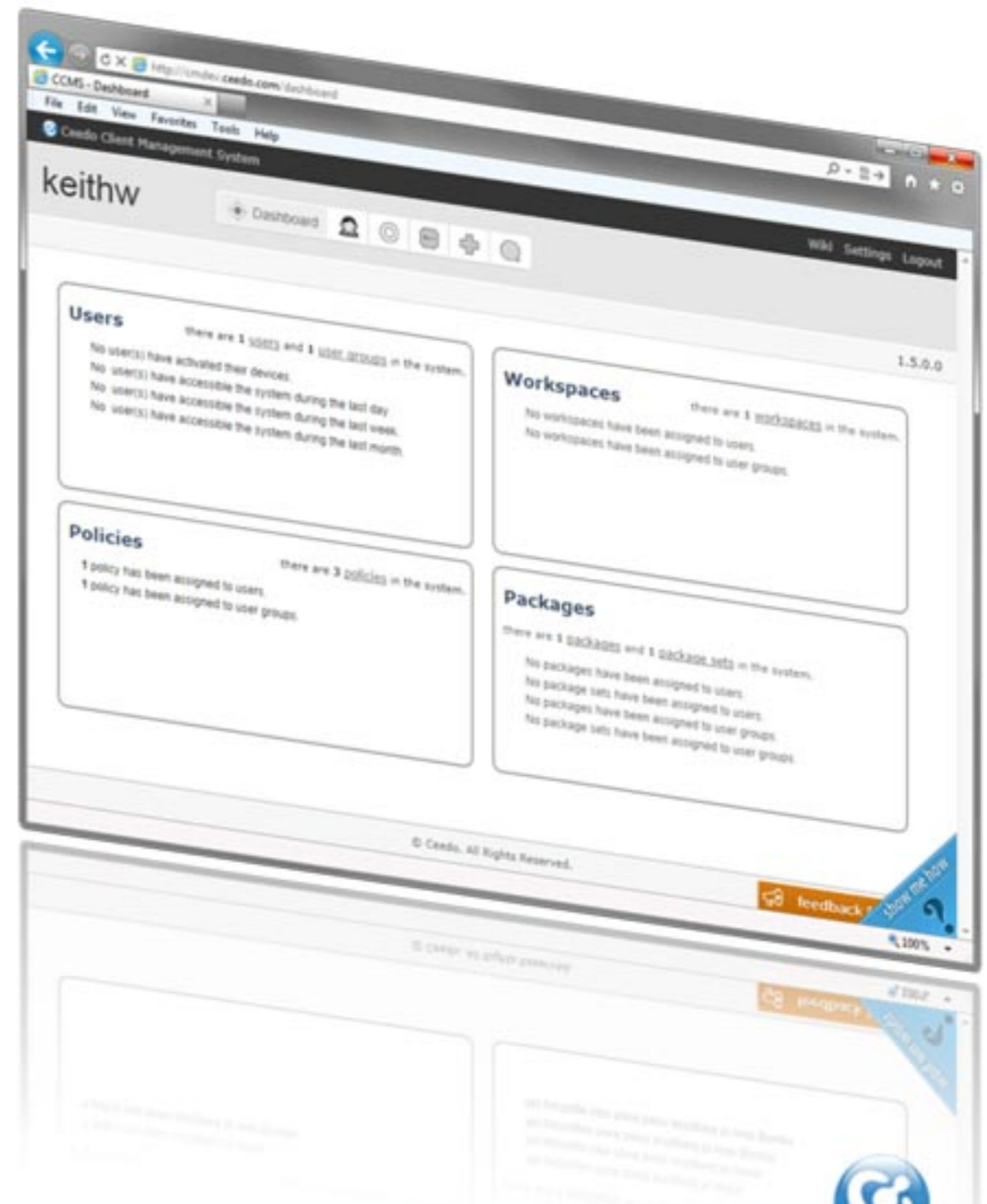
Policy File

-  The Policy File contains all of the Policy Configurations.
-  The Policy File can be imported into CCMS, and then pushed to the end-users' workspaces in the field.
-  The Policy file is created using CEM (Using the *Configure* tab).
-  The Policy file is an encoded *.ini* file that resides inside the *AdmPrefs.dll*.



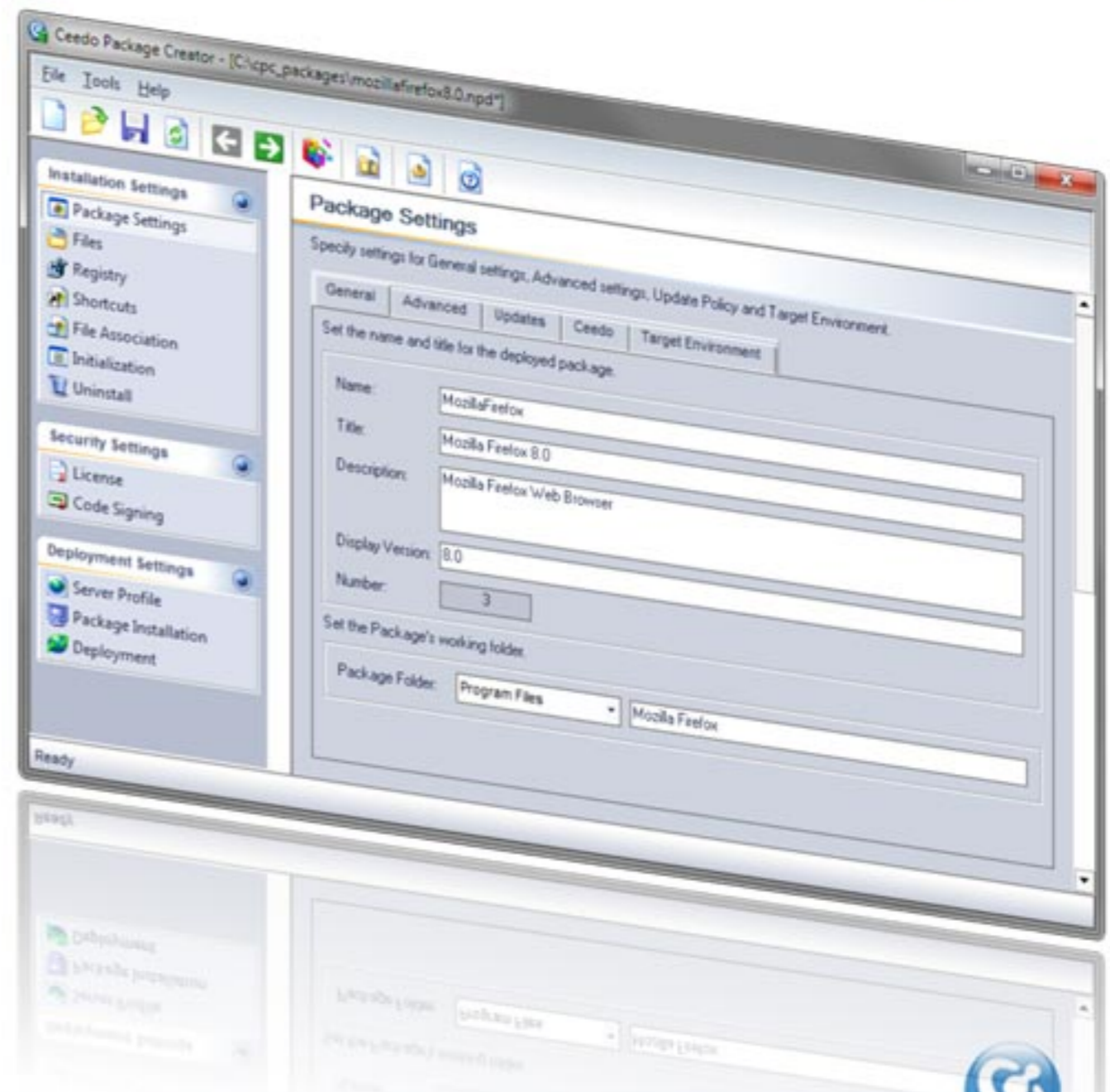
Ceedo Client Management System (CCMS)

- ④ Ceedo Client Management System (CCMS) is used for managing deployed Ceedo Enterprise workspaces.
- ④ CCMS enables administrators to manage the following:
 - Activation
 - Users
 - User Groups
 - Policies
 - Packages
 - Announcements
 - And more...



Ceedo Package Creator (CPC)

- ⊕ CPC allows service providers and software vendors to provide their customers with applications that include all the functionality, usability and high performance of a desktop client, while enjoying the accessibility and flexible maintenance of a Web service.



Package

- ④ A package is an application, a set of applications, or a set of instructions for the workspace.
- ④ Packages are created using the CPC.
- ④ Packages can be added to a CCMS account and deployed to end-users.
- ④ Packages are delivered over the network at file level using Ceedo's proprietary streaming mechanism: **SmartPlay**.



Smart Paly

- 🌐 **SmartPlay** is a delivery mechanism/platform which streams packages at file level over the network.
- 🌐 The SmartPlay technology include many benefits. Among them:
 - Can download only delta (new/updated files)
 - Includes Workspace update instructions
 - Highly configurable
 - Feature-rich



Platform Files

🌐 Platform files are used by CCMS to update the Workspace

🌐 The Platform Files include:

- Ceedo core files
- Ceedo Branding files
- Ceedo Configuration files

Platform Updates

Platform: <http://files.ceedo.com/platform/core>

Resources: <http://files.ceedo.com/platform/settings/CeedoEnterprise>

User Interface: <http://files.ceedo.com/platform/brands/CECCMS2011>

Licensing

- ④ Each Ceedo Workspace requires a license to run.
- ④ The license is “bound” to the hardware the workspace files are stored on – usually USB’s VID, PID and serial.
- ④ The **Ceedo License Server (CLS)** is the server that provides the Ceedo license to the Workspace.
- ④ An **Activation Code** is used for activating the Ceedo Workspace on the USB drive. Activation Codes can be for a single device, or multiple device.
- ④ Ceedo Enterprise working without CCMS will contact the CLS directly with the Device ID and Activation code and will get the license as a result.
- ④ Each CCMS account has an activation code which is used by CCMS on behalf of the users in order to get the license for the user.



Ceedo

Flexible Computing

Thank You

www.ceedo.com